

- Meet The Experts -

# Basic Principles in Core Oral and Maxillofacial Surgery

Program

Tuttlingen, Germany

May 10<sup>th</sup> - 13<sup>th</sup>, 2016

- Pending for EACMFS CME credit points
  - Modular concept with practical hands-on workshops every day
  - Interactive case discussions
  - International, experienced faculty
- [www.sorg-group.com](http://www.sorg-group.com)

25 YEARS RESEARCH SCIENCE  
TEACHING EDUCATION

International Course

**S.O.R.G.** ACADEMY

[www.sorg-group.com](http://www.sorg-group.com)



# Basic Principles in Core Oral and Maxillofacial Surgery

## Innovation in Education

Alfred G. Becking, Oliver Scheunemann

We cordially invite you to our 7<sup>th</sup> modular course week on oral and cranio-maxillofacial surgery.

The Strasbourg Osteosynthesis Research Group (S.O.R.G.) was founded in 1989, and many surgeons and trainees have benefited from the expertise of S.O.R.G. and its workshops held all over the world.

The initial focus was to disseminate the osteosynthesis miniplate techniques pioneered by Prof. Champy. S.O.R.G. has now considerably expanded its range of activities to cover the entire therapeutic range of cranio-maxillofacial surgery, including traumatology, preprosthetic, orthognathic and reconstructive surgery to craniofacial surgery and deformities.

All these topics have been the focus of separate courses held over the years. In 2004, the group developed the concept of organizing a bi-annual course week during which up to 250 participants were given the opportunity to gain knowledge on a broad scope of cranio-maxillofacial surgery topics with courses in Madrid (Spain), Belek (Turkey) or Kos (Greece).

Having reviewed the course format and with the new high-class conference facilities in the outstanding teaching and educational centre in Tuttingen (Germany), the 2016 course "Basic Principles in Core Oral & Maxillofacial Surgery" features detailed overviews of the most commonly encountered areas of OMF surgery (traumatology, TMJ, orthognathic and preprosthetic surgery).

Let this high calibre scientific program and intensive discussions with colleagues and S.O.R.G. members capture your enthusiasm. The combination of theory and practical sessions allow for maximum benefit, especially for the younger trainees. We can guarantee you an excellent week, both scientifically and socially!



Alfred G. Becking  
Chairman  
S.O.R.G.



Oliver Scheunemann  
Secretary General  
S.O.R.G.

# International Faculty

## Day 1: Mandibular and Midfacial Trauma Management, Part 1

Section Chairman: **R. Bos**, Groningen, The Netherlands

Faculty: **R. Bos**, Groningen, The Netherlands **G. Lauer**, Dresden, Germany  
**E. Dierks**, Portland, OR, USA **N. McLeod**, Oxford, UK  
**J. de Lange**, Amsterdam, The Netherlands **W. Puelacher**, Innsbruck, Austria

## Day 2: Mandibular and Midfacial Trauma Management, Part 2

Section Chairman: **R. Bos**, Groningen, The Netherlands

Faculty: **R. Bos**, Groningen, The Netherlands **G. Lauer**, Dresden, Germany  
**E. Dierks**, Portland, OR, USA **N. McLeod**, Oxford, UK  
**J. de Lange**, Amsterdam, The Netherlands **W. Puelacher**, Innsbruck, Austria

## Day 2: TMJ Trauma Management

Section Chairman: **G. Undt**, Vienna, Austria

Faculty: **F. Monje**, Badajoz, Spain **A. Sidebottom**, Nottingham, UK  
**A. Neff**, Marburg, Germany **G. Undt**, Vienna, Austria  
**N. Saeed**, Oxford, UK

## Day 3: Basic Principles in Orthognathic Management

Section Chairman: **D. Richardson**, Liverpool, UK

Faculty: **E. Becking**, Amsterdam, The Netherlands **D. Richardson**, Liverpool, UK  
**T. Hoppenreijts**, Arnhem, The Netherlands **G. Swennen**, Brugge, Belgium  
**T. Morris**, Liverpool, UK

## Day 4: Assessment, Planning and Treatment of Alveolar Bone Loss

Section Chairman: **J. Fennis**, Arnhem, The Netherlands

Faculty: **S. Basa**, Istanbul, Turkey **G. Raghoebar**, Groningen, The Netherlands  
**J. Fennis**, Arnhem, The Netherlands **H. Schliephake**, Göttingen, Germany  
**J. Hidding**, Mönchengladbach, Germany **M. Sjöström**, Umeå, Sweden  
**S. Lundgren**, Umeå, Sweden **A. Summerwill**, Birmingham, UK  
**E. Nkenke**, Vienna, Austria **H. Terheyden**, Kassel, Germany

# Program

**1<sup>st</sup> Day** (Tuesday, May 10<sup>th</sup>, 2016)

## Mandibular and Midfacial Trauma Management, Part 1

<b>07.30 - 08.30</b>	<b>Registration</b>	
<b>08.30 - 08.40</b>	<b>Welcome and Opening</b>	<b>Becking</b>
<b>08.40 - 09.05</b>	Imaging in CMF trauma	<b>McLeod</b>
<b>09.05 - 09.15</b>	Discussion	
<b>09.15 - 09.40</b>	Past and present of osteosynthesis development	<b>Bos</b>
<b>09.40 - 09.50</b>	Discussion	
<b>09.50 - 10.15</b>	Non-complicated mandibular fractures	<b>Lauer</b>
<b>10.15 - 10.25</b>	Discussion	
<b>10.25 - 10.50</b>	<b>Coffee break</b>	
<b>10.50 - 11.15</b>	Complicated mandibular fractures	<b>De Lange</b>
<b>11.15 - 11.25</b>	Discussion	
<b>11.25 - 11.30</b>	Walk to the workshop rooms	
<b>11.30 - 13.00</b>	Hands-on workshop: - Angle and paramedian mandibular fractures (mini-plates) - Comminuted mandibular fractures (locking plate + micro-plates)	
<b>13.00 - 14.00</b>	<b>Lunch break</b>	
<b>14.00 - 14.25</b>	Midfacial fracture treatment	<b>Puelacher</b>
<b>14.25 - 14.35</b>	Discussion	
<b>14.35 - 15.00</b>	Surgical approaches	<b>De Lange</b>
<b>15.00 - 15.10</b>	Discussion	
<b>15.10 - 15.35</b>	Fractures of the growing skeleton	<b>McLeod</b>
<b>15.35 - 15.45</b>	Discussion	
<b>15.45 - 16.15</b>	<b>Coffee break</b>	
<b>16.15 - 16.55</b>	Orbital wall fractures	<b>Puelacher</b>
<b>16.55 - 17.00</b>	Discussion	
<b>17.00 - 18.00</b>	Case discussions	<b>Faculty and participants</b>

## 2<sup>nd</sup> Day (Wednesday, May 11<sup>th</sup>, 2016)

### Mandibular and Midfacial Trauma Management, Part 2

08.30 - 08.55	Naso-orbito-ethmoidal fractures	<i>Lauer</i>
08.55 - 09.05	Discussion	
09.05 - 09.30	Frontal sinus/skull base fractures	<i>Dierks</i>
09.30 - 09.40	Discussion	
09.40 - 10.05	Penetrating maxillofacial trauma/gun-shot wounds	<i>Dierks</i>
10.05 - 10.15	Discussion	
<hr/>		
10.15 - 10.40	<b>Coffee Break</b>	
<hr/>		
10.40 - 11.05	Pan-facial fractures	<i>Bos</i>
11.05 - 11.15	Discussion	
11.15 - 11.20	Walk to the workshop rooms	
11.20 - 13.00	Hands-on workshop: - Midfacial fractures (micro-plates and SonicWeld Rx®)	
<hr/>		
13.00 - 14.00	<b>Lunch Break</b>	



# Program

## 2<sup>nd</sup> Day (Wednesday, May 11<sup>th</sup>, 2016)

### TMJ Trauma Management

14.00 - 14.25	A new classification of condylar head fractures	<b><i>Neff</i></b>
14.25 - 14.30	Discussion	
14.30 - 14.55	The preauricular and retroauricular approaches	<b><i>Neff</i></b>
14.55 - 15.00	Discussion	
15.00 - 15.25	The submandibular, retromandibular and transoral approaches	<b><i>Sidebottom</i></b>
15.25 - 15.30	Discussion	
<hr/>		
15.30 - 16.00	<b>Coffee Break</b>	
<hr/>		
16.00 - 16.25	Osteosynthesis materials	<b><i>Saeed</i></b>
16.25 - 16.30	Discussion	
16.30 - 16.55	Soft tissue injuries	<b><i>Undt</i></b>
16.55 - 17.00	Discussion	
17.00 - 17.25	General complications in TMJ trauma surgery	<b><i>Monje</i></b>
17.25 - 17.30	Discussion and final remarks	



## 3<sup>rd</sup> Day (Thursday, May 12<sup>th</sup>, 2016)

### Basic Principles in Orthognathic Management

	<b>Diagnosis and treatment planning</b>	
08.30 - 08.45	Indications and Patient selection	<i>Richardson</i>
08.45 - 09.15	Orthodontic alternatives to surgery	<i>Morris</i>
09.15 - 09.45	Surgical diagnosis and treatment planning	<i>Richardson</i>
09.45 - 10.15	Pre surgical orthodontics	<i>Morris</i>
10.15 - 10.30	Discussion	
<hr/>		
10.30 - 11.00	<b>Coffee Break</b>	
<hr/>		
	<b>Surgical Technical Planning</b>	
11.00 - 11.30	Conventional surgical planning and splints	<i>Becking</i>
11.30 - 12.15	Virtual surgical planning	<i>Swennen</i>
12.15 - 12.30	Discussion	
<hr/>		
12.30 - 13.30	<b>Lunch Break</b>	
<hr/>		
	<b>Surgical Treatment</b>	
13.30 - 14.00	Maxillary osteotomies	<i>Becking</i>
14.00 - 14.30	Mandibular osteotomies	<i>Hoppenreijs</i>
14.30 - 15.00	Genioplasty	<i>Swennen</i>
15.00 - 15.15	Other procedures	<i>Richardson</i>
15.15 - 15.30	Discussion	
<hr/>		
15.30 - 16.00	<b>Coffee Break</b>	
<hr/>		
	<b>Outcomes</b>	
16.00 - 16.30	Condylar resorbtion	<i>Hoppenreijs</i>
16.30 - 17.00	Surgical relapse	<i>Richardson</i>
17.00 - 17.30	Orthodontic relapse	<i>Morris</i>
17.30 - 17.45	PROMS /Quality of Life	<i>Richardson</i>
17.45 - 18.00	Discussion	

# Program

## 4<sup>th</sup> Day (Friday, May 13<sup>th</sup>, 2016)

### Assessment, Planning and Treatment of Alveolar Bone Loss

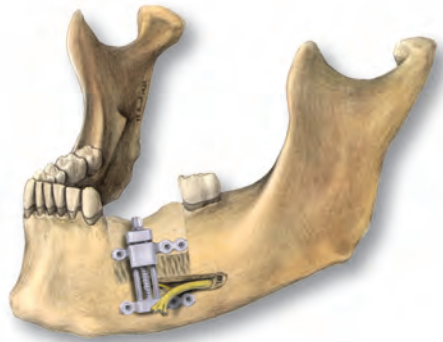
08.30 - 08.40	<b>Welcome and Introduction</b>	<i>Fennis</i>
08.40 - 09.00	Prosthodontic Considerations in Preprosthetic Surgery	<i>Summerwill</i>
09.00 - 09.20	Regional Bone Harvest: posterior mandible / chin	<i>Basa</i>
09.20 - 09.40	Iliac Crest Bone Harvest: anterior & posterior	<i>Nkenke</i>
09.40 - 10.00	Biomaterials in alveolar reconstruction Application / safety / +/- particulate bone / membranes	<i>Schliephake</i>
10.00 - 10.30	Single Tooth Replacement in the Aesthetic Zone	<i>Raghoobar</i>
10.30 - 11.00	<b>Coffee Break</b>	
11.00 - 11.20	Augmentation of the Posterior Maxilla without graft	<i>Lundgren</i>
11.20 - 11.40	Reconstruction in the Atrophic Maxilla with graft	<i>Fennis</i>
11.40 - 12.00	Augmentation of the Posterior Mandible	<i>Terheyden</i>
12.00 - 12.30	Vertical Augmentation of the Anterior Maxilla (incl. complications)	<i>Hidding</i>
12.30 - 13.30	<b>Lunch Break</b>	
13.30 - 14.00	Alveolar Bone Grafting in Cleft Patients	<i>Sjöström</i>
14.00 - 14.30	Reconstruction in 3D-defects misplaced implants Complications, Pitfalls and Salvage of Alveolar Reconstruction: maxillary sinus infections / retreatment after previous (pre-)implant surgery / dehiscences	<i>Lundgren</i>
14.30 - 15.30	Podium Discussion: Virtual Planning and Guided Surgery: PROs and CONS	<i>Faculty</i>
15.30 - 16.00	<b>Coffee Break</b>	



## 4<sup>th</sup> Day (Friday, May 13<sup>th</sup>, 2016)

### Assessment, Planning and Treatment of Alveolar Bone Loss

- |                      |  |                |
|----------------------|--|----------------|
| <b>16.00 - 18.00</b> | Hands-on Exercises <ul style="list-style-type: none"><li>- posterior mandibular onlay graft in anterior maxilla</li><li>- vertical distraction anterior mandible</li></ul> | <b>Faculty</b> |
|----------------------|--|----------------|



## Insurance

The course organization does not arrange insurance to cover participants against accidents or other risks. Personal belongings deposited in the lecture or workshop rooms are at the responsibility of their owner. eived by the stated cancellation deadline. When writing your cancellation please include the details of your credit card or bank details (SWIFT/IBAN).

## CME Credit Points

Pending for EACMFS Credit Points

## Course Language

English, no simultaneous translation will be offered.

## Questionnaires and Certificates

Please leave your questionnaire every day at the registration desk.  
Please pick up your certificate at the registration desk after finishing the course before your departure.

## Cancellation Policy

Cancellation by course organizer:

- the course organizer reserves the right to cancel an event due to low enrollment or other circumstances which would make the course non-viable.
- if the organizer cancels a course, registrants will be offered a full refund of registration fees.
- should circumstances arise that result in postponement of a course, the organizer has the right to either issue a full refund or transfer registration to the same event at the new, future date.

Registration cancellation by participant:

- the deadline to receive a refund for your registration is 21 business days before the course.
- registration cancellations received prior to the deadline may be eligible to receive a refund less a service fee of €100,-.
- cancellations received after the stated deadline will not be eligible for a refund.
- refunds will not be available for registrants who choose not to attend the course.
- cancellations will be accepted in writing only and must be received by the stated cancellation deadline. When writing your cancellation please include the details of your credit card or bank details (SWIFT/IBAN).

## Course Venue

KLS Martin WORLD  
Teaching & Education Center  
KLS Martin Platz 2  
78532 Tuttlingen / Germany  
www.klsmartin.com

1. KLS Martin WORLD is the official venue for the course.
2. Bookings need to be directed to S.O.R.G. secretary only.
3. The organizing parties have the right to charge extra fees for participants not respecting the official way of booking (as specified under 1. and 2.).
4. Due to limited available attendance, quick registration is strongly recommended.

## Course Fee

The **course fee** is **€ 1.950** and comprises the following features, activities and services:

- Full course participation including all lectures, case discussions and hands-on workshops
- Accommodation in single room in a 4-star-hotel in the Tuttlingen area incl. breakfast
- Full catering during course times
- Daily Meet-the-experts get-together with the faculty after each course day
- Transports from and to closest airports (Stuttgart or Zurich only)
- Two evening group events with faculty members

## Further Remarks

- Please submit special requests (like e.g. double room booking) to **info@sorg-group.com**
- For airport transfer bookings, please let us know your flight details until April 18<sup>th</sup>, 2016 at the latest. Transfers will only be guaranteed if your flight details are known by then.

### Please note

You can register online through the website **www.sorg-group.com**.

You will receive a confirmation as well as an invoice immediately after registration. Registration will be accepted on a "first come - first serve" basis.

Please arrange payment by credit card (Master Card or VISA). Payment is mandatory before attending the course. Registration is only valid and admission to the course will only be granted if payment is received within two weeks after receipt of invoice.

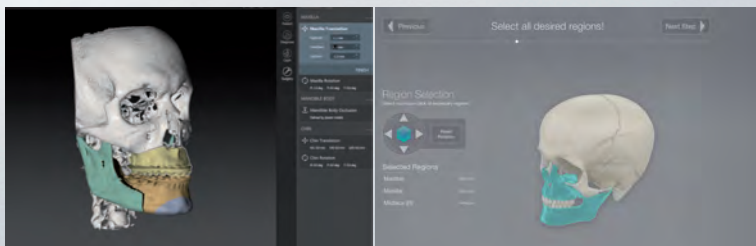
Early booking is advisable due to limited availability of spots. Participants will be allocated max. two different 4-star hotels.

# Individual Patient Solutions

*One Patient. One Solution.*

## IPS Implants

Patient specific implants, templates and guides available in different materials manufactured with the latest technologies.



## IPS CaseDesigner

Intuitive software for planning and simulating surgical interventions based on individual patient data sets.

## IPS Gate

A web-based platform and app guide the surgeon through the ordering, design and shipment process in a safe and efficient manner.

Gebrüder Martin GmbH & Co. KG  
A company of the KLS Martin Group  
[klsmartin.com](http://klsmartin.com)