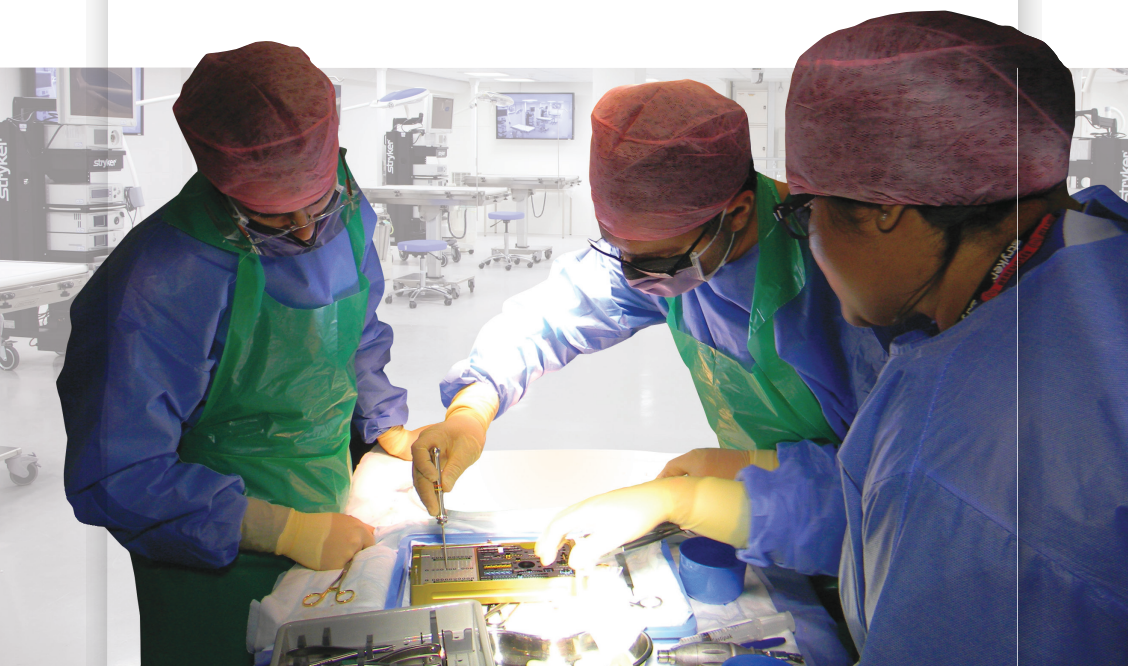




The Cambridge Cadaveric Facial Trauma Course

A fresh frozen cadaver course for Oral,
Maxillofacial and Plastic Surgery trainees

February 28th & March 1st 2018



For more information, please contact Julie Graham at: jlg37@medschl.cam.ac.uk

The Evelyn Cambridge Surgical Training Course

Facial Trauma Plating - Wet Lab



This two day, hands on cadaveric course uses fresh frozen specimens with multiple genuine facial fractures and is open to trainees in Oral & Maxillofacial and plastic Surgery plus related specialties involved in the care of trauma patients.

Course Summary

Hands on course with 2-3 delegates per work station undertaking operative procedures on fresh frozen cadaveric material with real bony injuries. The course emphasises surgical access and plating procedures needed to treat the bony facial skeleton.

It is conducted in a state of the art wet lab with instructors giving real time demonstrations of each procedure followed by the delegates operating themselves with expert faculty on hand throughout the day. By the end of the course each delegate should be familiar with standard approaches to the facial bony skeleton and principles of plating for each anatomical region.

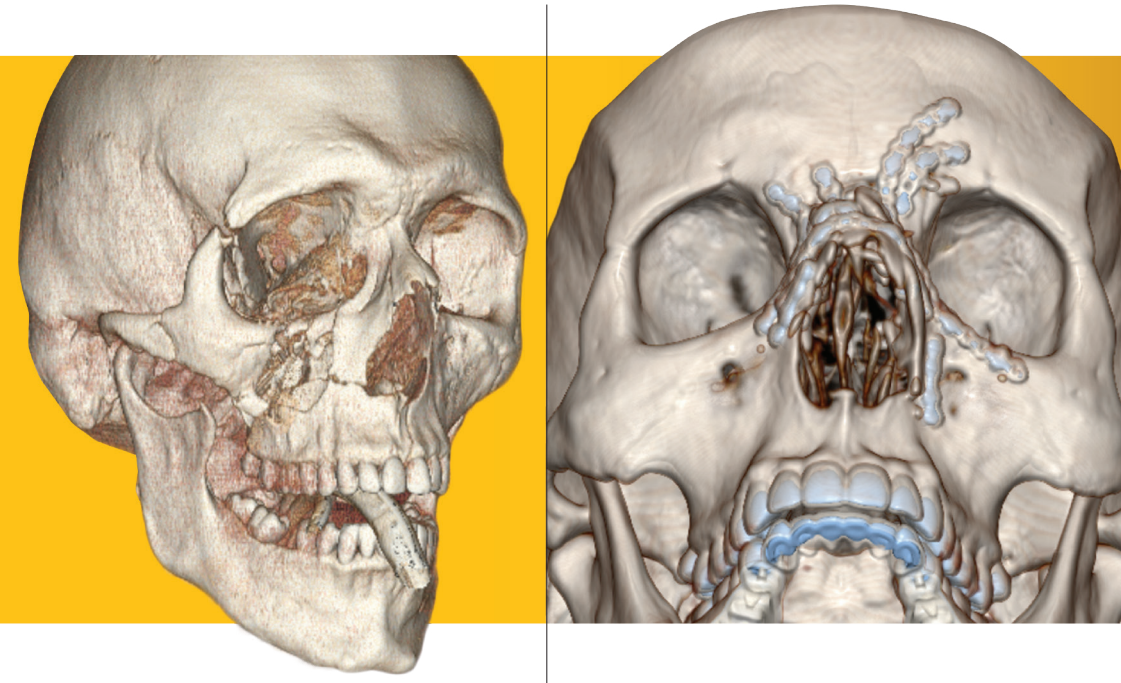
Areas covered include:

- **Mandible**
- **Maxilla**
- **Zygoma**
- **Orbit**
- **Nasoethmoidal**
- **Frontal**

The Evelyn Cambridge Surgical Training Centre



A Cambridge University Health Partners Facility



Registration

The preferential rate for this course is continued from last year.

A two day course to include specimens (without 'C' Arm).

Number of delegates: 2-3 per station.

Number of faculty: 1 per station; 10 station maximum.

Course fee - £550.00

To book your place contact Julie Graham at: jlg37@medschl.cam.ac.uk

Held at: **The Evelyn Cambridge Surgical Training Centre**

Back Lane Melbourn Hertfordshire SG8 6DP England

The Evelyn Cambridge Surgical Training Centre



A Cambridge University Health Partners Facility

The Evelyn Cambridge Surgical Training Centre

Back Lane

Melbourn

Herts. SG8 6DP

Telephone: 01763 260155

Email: jlg37@medschl.cam.ac.uk

Contact

Julie Graham

Manager

jlg37@medschl.cam.ac.uk

t: +44 (0) 1763 260155

stryker

Stryker European Headquarters

Herikerbergweg 110

1101 CM Amsterdam

Netherlands

www.stryker.com

Contact

Sara Black

Medical Education Manager

sara.black@stryker.com

t: +44 (0) 7816 934 907