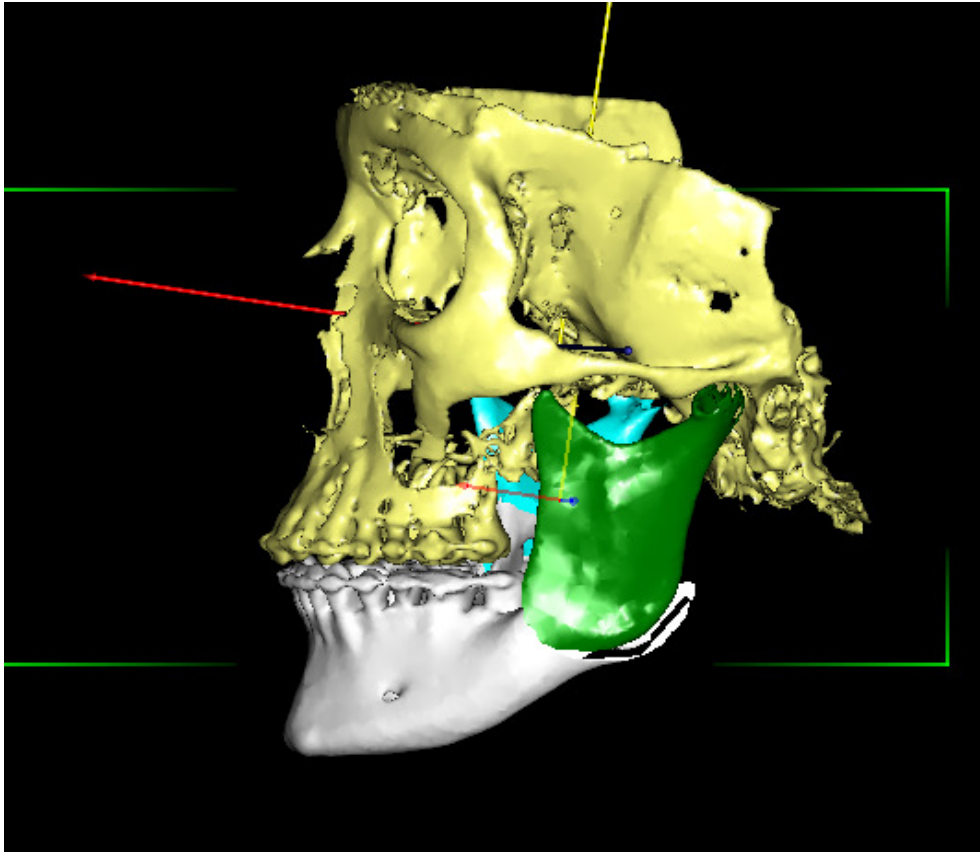


# ORTHOGNATHIC SURGERY

from the 13th to the 15th of May 2020

*Preliminary programme*



**Hands-on course for  
Oral and Maxillofacial Surgeons and Orthodontists**

Department of Oral and Maxillofacial Surgery  
Aarhus University Hospital  
Entrance J, J206  
Palle Juul-Jensens Blvd. 165

DK • 8200 Aarhus N



**ORTHO-  
GNATHIC**

# SURGERY

from the 13th to the 15th of May 2020

## Hands-on course for Oral and Maxillofacial Surgeons and Orthodontists

The aim of this three-day course is to demonstrate the importance of a close collaboration and understanding between the oral and maxillofacial surgeon and the orthodontist in the matter of diagnosis, treatment planning and performance of treatment of patients with growth abnormalities.

The maximum number of participants is limited to 12 to ensure optimal conditions for dialogue and demonstrations.

## Description

### The course includes

- surgical demonstrations (hands-on) on orthognathic surgical patients including conventional orthognathic surgery and distraction osteogenesis (5-7 patients)
- chairside demonstration on patients during different stages of treatment in our in-house orthodontic clinic
- orthodontic surgical planning sessions including virtual planning
- visitation of patients referred for orthognathic surgical treatment (3-4 patients each day)
- lectures on selected relevant topics; 2-4 hours each afternoon.

### Faculty

Martin Dahl, DDS, Chairman (MD)  
Thomas Klit Pedersen, DDS, PhD, Professor, Head of Orthodontic Clinic (TKP)  
Sven Erik Nørholt, DDS, PhD, Professor, Consultant surgeon (SEN)  
Jytte Buhl, DDS, Consultant surgeon (JBU)  
Johan Blomlöf, DDS, PhD, Consultant surgeon (JBL)  
Susanne Herskind, DDS Orthodontist (SH)  
Marianne Mortensen, DDS Orthodontist (MM)  
Annelise Küseler, DDS Orthodontist (AK)  
Mette W. Linderup, DDS, Maxillofacial surgeon (ML)

### Course venue

Department of Oral and Maxillofacial Surgery  
Aarhus University Hospital  
Entrance J, J206  
Palle Juul-Jensens Blvd. 165  
DK • 8200 Aarhus N  
Course secretary Charlotte Wilsky  
☎ +45 78 46 10 80  
✉ chapur@rm.dk

# Programme

## Wednesday, 13th of May

08.00 - 08.15 Welcome, Coffee & bread

08.15 - 09.00 Presentation of surgical patients

09.00 - 13.00 Surgery **Two orthognathic surgical cases**

Orthodontic clinic

- Patients, Surgical planning
- Orthognathic surgical visitation

13.00 - 13.30 Lunch

13.30 - 14.00 Lecture

“Orthognathic surgery: Benefits for the patients, indications and collaboration between the orthodontic and surgical specialities”, TKP

14.00 - 14.15 Discussion - break

14.15 – 15.00 Lecture

“*Orthognathic surgery I - Indications, comprehensive planning and registration*”, TKP

15.00 - 15.15 Discussion - break

15.15 - 16.00 “*Orthognathic surgery II - Surgical technique*”, JBU

16.00 – 16.45 “*Orthognathic surgery III - complications*”, SEN

16.45 - 17.00 Discussion

17.00 - 18.00 Welcome reception at the hospital

Coffee will be served during discussion/break

## Thursday, 14th of May

08.00 – 09.00 Coffee & bread. Case presentation surgical cases  
*“Osseodistraction in orthognathic surgery - Maxilla”, SEN*

09.00 - 13.00 Surgery **Two orthognathic surgical cases**  
Orthodontic clinic

- Patients
- Orthognathic surgical visitation
- Virtual planning

13.00 - 13.30 Lunch

13.30 - 13.50 Lecture  
*“Osseodistraction in orthognathic surgery - Mandible”, TKP*

13.50 - 14.10 *“Osseodistraction in orthognathic surgery – Mandible”, SEN*

14.10 - 14.25 Discussion

14.25 - 14.45 Lectures  
*“Orthognathic surgery in cases with agenesis or loss of teeth”, JBU + TKP*

14.45 - 15.15 *“Surgery First”, JBU + TKP*

15.15 – 15.30 Discussion – Break

15.30 - 16.00 Lecture  
*“Sleep apnea”, ML*

16.00 - Discussion

Coffee will be served during discussion/break

18.30 Dinner at a restaurant

## Friday, 15th of May

08.00 - 09.00 Coffee & bread. Presentation of surgical patients  
*"Blood loss in orthognathic surgical procedures"*, JBL

09.00 - 12.30 Surgery **Two orthognathic surgical cases**  
Orthodontic clinic

- Patients
- Orthodontic surgical visitation

12.30 - 13.00 Lunch

13.00 - 13.30 Lecture  
*"Virtual surgical planning – surgical aspects"*, SEN / JBL

13.30 - 14.00 *Pathology of the TMJ – management and consequences"*, TKP

14.00 - 14.15 Discussion - Coffee break

14.15 - 14.30 *Course evaluation*

Coffee will be served during discussion/break