

# Presentation at the EACMFS Council



## The training experience in Amiens

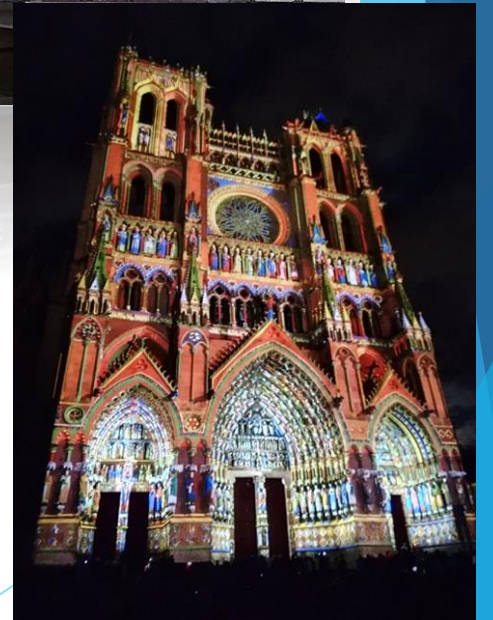
From June 18, 2019 to September 10, 2019

**Yiannis (Ioannis) Papadiochos**

MD, DDS, cMSc (med)

Oral and Maxillofacial Surgeon

Awardee of EACMFS Leibinger Prize 2018



*Paris, 14<sup>th</sup> September 2019*



# Leibinger Award



September 20, 2018



# My expectations and my objectives

## ► *Primary aim:*

*Improved clinical experience in microsurgical reconstruction of head and neck post-ablative defects*

## ► *The problem:*

*In Greece, almost all the OMFS surgeons are not used to independently perform microsurgical reconstructive procedures*





EUROPEAN ASSOCIATION FOR  
CRANIO MAXILLO FACIAL  
SURGERY

The European Association For Cranio Maxillo Facial Surgery  
and Stryker Corporation are proud to present

**The Leibinger Award**

stryker

Why did I apply for a  
clinical fellowship in  
OMFS clinic of Amiens?



# The Clinic of Oral and Maxillofacial Surgery in Amiens

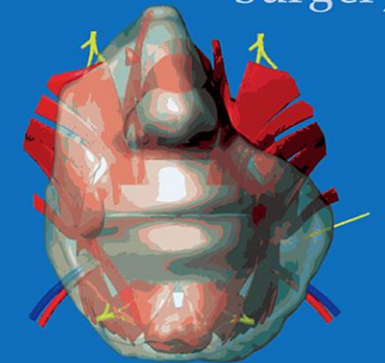
Why did I select this clinic?

## ► Excellent reputation

In November 2005, the Department of Maxillofacial Surgery, under the leadership of Professor Devauchelle and Professor Testelin, carried out the world's first partial facial transplantation



Journal of  
**Cranio-Maxillo-Facial  
Surgery**



Official Journal of the  
European Association for Cranio-Maxillo-Facial Surgery  
[www.jcmfs.com](http://www.jcmfs.com)

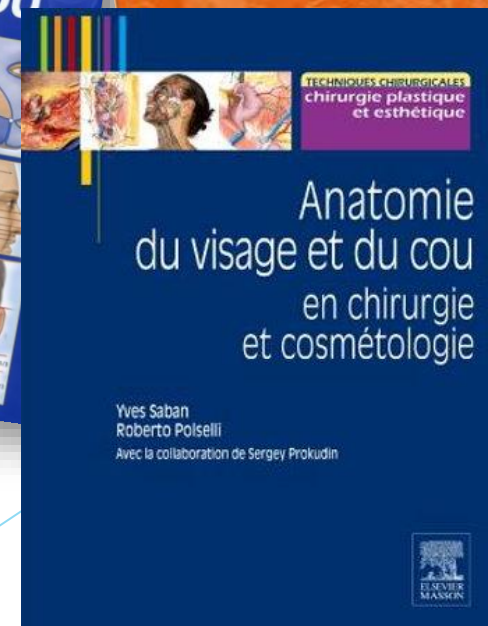


# The Clinic of Oral and Maxillofacial Surgery in Amiens

## Why did I select this clinic?

*Admiration and respect for the skills of French surgeons*

*A lot of technical notes and modifications in French Surgical Journals and Books*



# The Clinic of Oral and Maxillofacial Surgery in Amiens

## Why did I select this clinic?

- In 2015, a Belgian colleague recommended me this clinic as “....*the most suitable for training in microsurgical reconstruction among all the maxillofacial surgery clinics in France*”

TOP  
10

HÔPITAUX						
		ACTIVITÉ	NOTORIÉTÉ	DURÉE DE SÉJOUR	AMBULATOIRE	INDICE DE GRATUITÉ
1 <sup>er</sup>	Hôpital de la Pitié-Salpêtrière, Paris	2 025	75 %	6,7	19 %	37,5
2 <sup>e</sup>	CHU - Hôpital Purpan, Toulouse (Haute-Garonne)	1 728	49 %	8	45 %	42
3 <sup>e</sup>	CHU - Hôpital Roger-Salengro, Lille (Nord)	1 965	31 %	5,5	42 %	34,5
4 <sup>e</sup>	CHU - Hôpital Pellegrin, Bordeaux (Gironde)	1 682	40 %	8,3	39 %	46
5 <sup>e</sup>	Institut universitaire de la face et du cou, Nice (Alpes-Maritimes)	1 134	15 %	7,7	56 %	41,2
6 <sup>e</sup>	CHU - Hôp. Gui-de-Chauliac, Montpellier (Hérault)	1 046	38 %	6,8	40 %	40,5
7 <sup>e</sup>	CHU d'Amiens, Salouel (Somme)	1 021	45 %	7,4	32 %	39,9
8 <sup>e</sup>	CHU - Hôtel-Dieu - Hôpital mère enfant, Nantes (Loire-Atlantique)	1 302	41 %	5,7	25 %	37,4
9 <sup>e</sup>	CHU Grenoble - Site Nord, La Tronche (Isère)	1 008	32 %	8,1	32 %	40,3
10 <sup>e</sup>	Hôpital Necker-Enfants-Malades, Paris	1 375	86 %	5,1	11 %	32,5

CHIRURGIE MAXILLO-FACIALE						
HÔPITAUX						
		ACTIVITÉ	NOTORIÉTÉ	DURÉE DE SÉJOUR	AMBULATOIRE	INDICE DE GRATUITÉ
1 <sup>er</sup>	Hôpital de la Pitié-Salpêtrière, Paris	2 025	75 %	6,7	19 %	37,5
2 <sup>e</sup>	CHU - Hôpital Purpan, Toulouse (Haute-Garonne)	1 728	49 %	8	45 %	42
3 <sup>e</sup>	CHU - Hôpital Roger-Salengro, Lille (Nord)	1 965	31 %	5,5	42 %	34,5
4 <sup>e</sup>	CHU - Hôpital Pellegrin, Bordeaux (Gironde)	1 682	40 %	8,3	39 %	46
5 <sup>e</sup>	Institut universitaire de la face et du cou, Nice (Alpes-Maritimes)	1 134	15 %	7,7	56 %	41,2
6 <sup>e</sup>	CHU - Hôp. Gui-de-Chauliac, Montpellier (Hérault)	1 046	38 %	6,8	40 %	40,5
7 <sup>e</sup>	CHU d'Amiens, Salouel (Somme)	1 021	45 %	7,4	32 %	39,9
8 <sup>e</sup>	CHU - Hôtel-Dieu - Hôpital mère enfant, Nantes (Loire-Atlantique)	1 302	41 %	5,7	25 %	37,4
9 <sup>e</sup>	CHU Grenoble - Site Nord, La Tronche (Isère)	1 008	32 %	8,1	32 %	40,3
10 <sup>e</sup>	Hôpital Necker-Enfants-Malades, Paris	1 375	86 %	5,1	11 %	32,5
11 <sup>e</sup>	CHU Caen (Calvados)	903	40 %	6,5	40 %	39,7
12 <sup>e</sup>	CHU - Hôp. Charles-Nicolas, Rouen (Seine-Maritime)	950	29 %	6,5	40 %	35,7
13 <sup>e</sup>	CHU Angers (Maine-et-Loire)	726	30 %	5,6	55 %	39,1
14 <sup>e</sup>	CHU Dijon (Côte-d'Or)	717	55 %	9,1	35 %	40,2
15 <sup>e</sup>	Hôpital européen, Marseille (Bouches-du-Rhône)	969	8 %	3,3	87 %	29,1
16 <sup>e</sup>	Hôpital de la Conception, Marseille (Bouches-du-Rhône)	909	33 %	4,5	28 %	32,7
17 <sup>e</sup>	CHU Nîmes (Gard)	620	20 %	5,5	46 %	40,9
18 <sup>e</sup>	CHU - Hôp. Trousseau, Tours (Indre-et-Loire)	821	49 %	4,5	26 %	34,4
19 <sup>e</sup>	CH Lyon-Sud, Pierre-Bénite (Rhône)	836	50 %	3,5	34 %	30,3
20 <sup>e</sup>	CHU Besançon (Doubs)	716	45 %	9,4	39 %	38,6
21 <sup>e</sup>	Hôpitaux Nord (Croix-Rousse), Lyon (Rhône)	825	43 %	5,3	17 %	33
22 <sup>e</sup>	CHU - Hôpital Nord, Saint-Etienne (Loire)	573	23 %	9,5	50 %	44,1
23 <sup>e</sup>	Clinique mutualiste de Bonneveine, Marseille (Bouches-du-Rhône)	699	7 %	2,1	96 %	34,1
24 <sup>e</sup>	CHU - Hôp. Central, Nancy (Meurthe-et-Moselle)	537	55 %	14,9	24 %	46,3
25 <sup>e</sup>	CHU - Hôp. d'Estaing, Clermont-Ferrand (Puy-de-Dôme)	606	43 %	4,5	29 %	36,8
26 <sup>e</sup>	CHU - Hôpital Dupuytren, Limoges (Haute-Vienne)	466	51 %	9	48 %	42,3
27 <sup>e</sup>	CHR de Metz-Thionville - Hôp. de Mercy, Ars-Laquenexy (Moselle)	580	16 %	4,1	63 %	35,2
28 <sup>e</sup>	CH Perpignan (Pyrénées-Orientales)	622	16 %	4,1	43 %	30,2
29 <sup>e</sup>	CHU, Poitiers (Vienne)	433	50 %	11	43 %	49,1
30 <sup>e</sup>	Gustave-Roussy (CLCC), Villejuif (Val-de-Marne)	439	88 %	12,9	10 %	56,4
31 <sup>e</sup>	CHU - Hôpital Morvan, Brest (Finistère)	532	8 %	1,7	25 %	39,6
32 <sup>e</sup>	CHU - Hôpital civil, Strasbourg (Bas-Rhin)	603	26 %	3,2	34 %	30,1
33 <sup>e</sup>	CH Ardeche-Nord, Annonay (Ardeche)	551	32 %	1,4	93 %	25
34 <sup>e</sup>	Hôpital Femme-Mère-Enfant, Bron (Rhône)	415	55 %	5	19 %	44,1
35 <sup>e</sup>	CH, Roanne (Loire)	426	25 %	9,6	79 %	45,1
36 <sup>e</sup>	CH Erdre-et-Loire, Ancenis (Loire-Atlantique)	548	35 %	2,8	83 %	26,4
37 <sup>e</sup>	CHU - Hôpital Pontchaillou, Rennes (Ille-et-Vilaine)	520	47 %	8	21 %	38,4
38 <sup>e</sup>	GH Saint-Joseph, Paris	379	63 %	7,2	53 %	47
39 <sup>e</sup>	CHU - Gabriel-Montpied, Clermont-Ferrand (Puy-de-Dôme)	386	38 %	22,4	74 %	60,9
40 <sup>e</sup>	CH, Annecy (Haute-Savoie)	451	37 %	5,1	32 %	36,9
41 <sup>e</sup>	CH intercommunal, Villeneuve-Saint-Georges (Val-de-Marne)	459	65 %	4,6	18 %	34,2
42 <sup>e</sup>	CHU - Hôp. de Haute-pierre, Strasbourg (Bas-Rhin)	379	31 %	12,7	30 %	45,3
43 <sup>e</sup>	Hôpital Bicêtre, Le Kremlin-Bicêtre (Val-de-Marne)	340	60 %	11,7	15 %	61,9
44 <sup>e</sup>	Centre Henri-Beccarel (CLCC), Rouen (Seine-Maritime)	322	20 %	17,9	83 %	62,3
45 <sup>e</sup>	CH, Valenciennes (Nord)	451	5 %	4,3	12 %	32,7
46 <sup>e</sup>	GH de la région de Mulhouse et Sud Alsace, Mulhouse (Haut-Rhin)	410	7 %	5,9	83 %	34,8
47 <sup>e</sup>	CHR, Orléans (Loiret)	398	13 %	5,3	39 %	37,4

CLINIQUES						
1 <sup>er</sup>	Hôpital privé du Confluent, Nantes (Loire-Atlantique)					
2 <sup>e</sup>	Clinique La Châtaignerie, Beaumont (Puy-de-Dôme)					
3 <sup>e</sup>	Clinique Turin, Paris					
4 <sup>e</sup>	CH privé Saint-Grégoire, Saint-Grégoire (Ille-et-Vilaine)					
5 <sup>e</sup>	Clinique mutualiste Jules-Verne, Nantes (Loire-Atlantique)					
6 <sup>e</sup>	Clinique de l'Anjou, Angers (Maine-et-Loire)					
7 <sup>e</sup>	Hôpital privé Toulon Hyères - Sainte-Marguerite, Hyères					
8 <sup>e</sup>	Pôle Santé Léonard-de-Vinci, Chambray-les-Tours (Indre-et-Loire)					
9 <sup>e</sup>	Clinique Bouchard, Marseille (Bouches-du-Rhône)					
10 <sup>e</sup>	Polyclinique de Reims-Bezannes (Marne)					
11 <sup>e</sup>	Santé Atlantique, Saint-Herblain (Loire-Atlantique)					
12 <sup>e</sup>	CH privé Claude-Gallien, Quilly-sous-Sénart (Essonne)					
13 <sup>e</sup>	Clinique Hartmann, Neuilly-sur-Seine (Hauts-de-Seine)					
14 <sup>e</sup>	Polyclinique de Bordeaux-Tondou, Bordeaux (Gironde)					
15 <sup>e</sup>	Polyclinique Saint-Roch, Montpellier (Hérault)					
16 <sup>e</sup>	Clinique Jeanne-d'Arc, Arles (Bouches-du-Rhône)					
17 <sup>e</sup>	Polyclinique du Bois, Lille (Nord)					
18 <sup>e</sup>	Hôpital privé Jean-Mermoz, Lyon (Rhône)					
19 <sup>e</sup>	Hôpital privé Paris-Essonne, Arpajon (Essonne)					
20 <sup>e</sup>	Clinique Rive-Gauche, Toulouse (Haute-Garonne)					
21 <sup>e</sup>	Clinique de Vitrolles (Bouches-du-Rhône)					
22 <sup>e</sup>	Clinique La Croix du sud, Toulouse (Haute-Garonne)					
23 <sup>e</sup>	Hôpital privé Clairval, Marseille (Bouches-du-Rhône)					
24 <sup>e</sup>	Méropole de Savoie, Challes-les-Eaux (Savoie)					
25 <sup>e</sup>	Polyclinique Bordeaux-Nord-Aquitaine, Bordeaux (Gironde)					
26 <sup>e</sup>	Clinique Breteche, Nantes (Loire-Atlantique)					
27 <sup>e</sup>	Hôp. privé de la Seine-Saint-Denis, Le Blanc-Mesnil (Seine-Saint-Denis)					
28 <sup>e</sup>	Nouvelle clinique Bel-Air, Bordeaux (Gironde)					
29 <sup>e</sup>	Clinique Saint-André, Vandœuvre-lès-Nancy (Meurthe-et-Moselle)					
30 <sup>e</sup>	Polyclinique Bordeaux-Rive droite, Lormont (Gironde)					
31 <sup>e</sup>	Clinique du Renaisson, Roanne (Loire)					
32 <sup>e</sup>	Clinique Bellefontaine, Saint-Martin-d'Hères (Isère)					
33 <sup>e</sup>	Centre médico-chirurgical du Mans, Le Mans (Sarthe)					
34 <sup>e</sup>	Clinique Belharra, Bayonne (Pyrénées-Atlantiques)					
35 <sup>e</sup>	Clinique Saint-George, Nice (Alpes-Maritimes)					
36 <sup>e</sup>	Méropole Garonne, Toulouse (Haute-Garonne)					
37 <sup>e</sup>	Hôpital privé d'Antony, Antony (Hauts-de-Seine)					
38 <sup>e</sup>	Polyclinique Saint-Jean, Montpellier (Hérault)					
39 <sup>e</sup>	Hôpital privé Toulon Hyères-Saint-Jean, Toulon (Var)					
40 <sup>e</sup>	Clinique Delay, Bayonne (Pyrénées-Atlantiques)					



# The hospital

The Amiens-Picardie University Hospital Center (CHU Amiens-Picardie) is a service with a total capacity of **1703 beds** and places in 2017.

It is located in Amiens in the region of Hauts-de-France, CHU Amiens-Picardie is composed of 3 distinct sites:

- ▶ **South Site**
- ▶ The North Site
- ▶ The Saint Victor Center

High rates of oral and pharyngeal cancer in areas in the north of France





# The structural hierarchy of Clinic

## The OMFS medical staff (Date: June 18, 2019)

- ▶ Head of the Clinic (1)
- ▶ Professor & Senior Consultant (1)
- ▶ Senior Consultant (1)
- ▶ Attached Consultants (4)
- ▶ General practitioners (2)
- ▶ Residents (6)



Teaching and  
training of many  
dental and  
medical students

# Function and activities of the Clinic

- ▶ Working hours from Monday to Friday: 8:15 to 18:30
- ▶ 2 visits per day
- ▶ Approximately 2 operating rooms for general anesthesia /per day the 3 out of 5 days (Monday to Friday)- 1 for the rest
- ▶ Consultations and operations under local anesthesia are performed at the outpatient department
- ▶ A scheduled clinic session/lecture every Wednesday morning

## Multidisciplinary (intra-or-interhospital) medical boards and medical meetings

- ▶ For management of head and neck tumors every week
- ▶ For management of skin pathologic lesions every 2 weeks
- ▶ For management of arteriovenous malformations every 6 weeks
- ▶ For management of cleft and orthognathic patients every week
- ▶ For management of craniofacial patients every 2 months

⇒⇒ **Cooperation with multiple dental specialties**





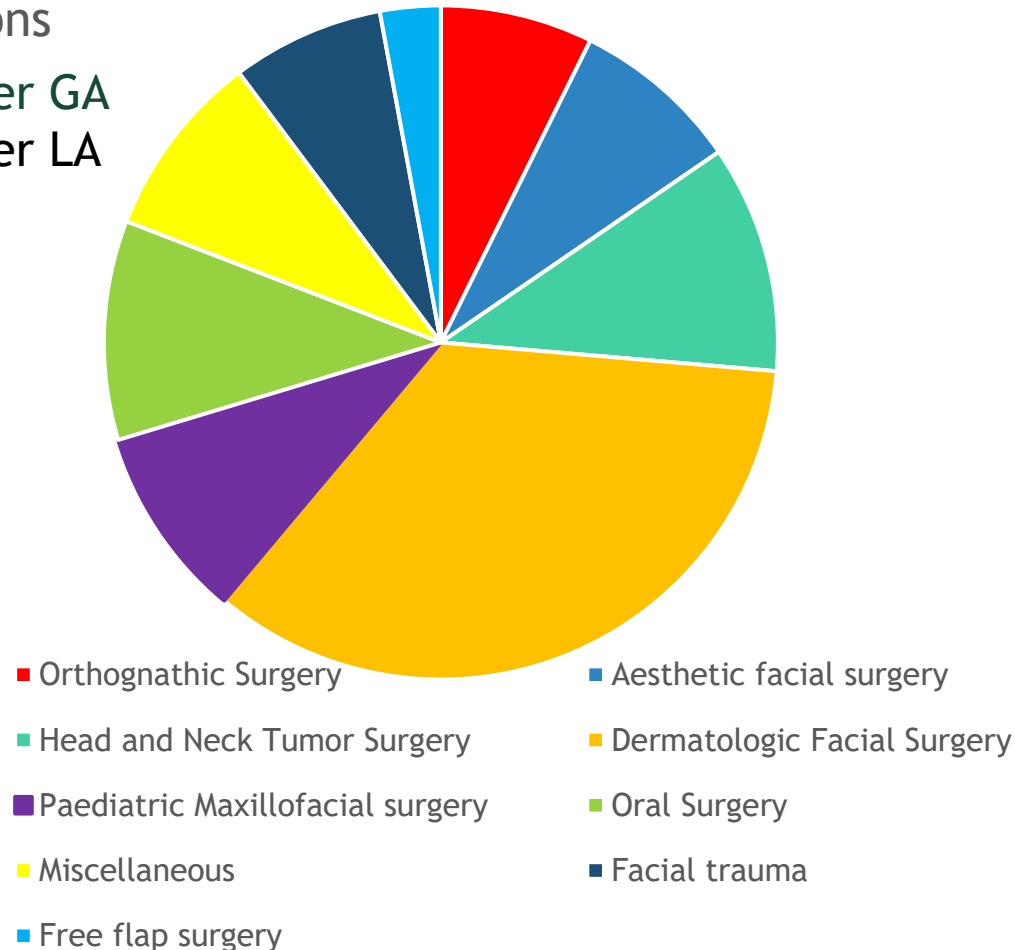
# 506 operations of different types

## From June 18, 2019

## to September 10, 2019

### Operations

287 under GA  
219 under LA



<b>Orthognathic Surgery</b> (osteotomies, Lefort I, genioplasty, BSSO etc)	7,30%
<b>Aesthetic facial surgery</b> (Facelift, Blepharoplasties, Rhinoplasties, Lipofilling etc)	8,10%
<b>Head and Neck Tumor Surgery</b> (Oral and oropharyngeal cancer, Salivary gland tumors etc)	10,90%
<b>Dermatologic Facial Surgery</b> (Skin tumors excision, scar correction, etc)	34,67%
<b>Paediatric Maxillofacial surgery</b> (Cleft surgery, cranioplasty, oral surgery in children)	9,20%
<b>Oral Surgery</b> (extraction of wisdom teeth, implant surgery, dentoalveolar surgery, etc.)	10,50%
<b>Miscellaneous</b> (removal of osteosynthesis plates, port insertion etc)	8,90%
<b>Facial trauma</b> (Facial fractures, gunshot injuries etc.)	7,30%
<b>Free flap reconstructions</b>	3,10%

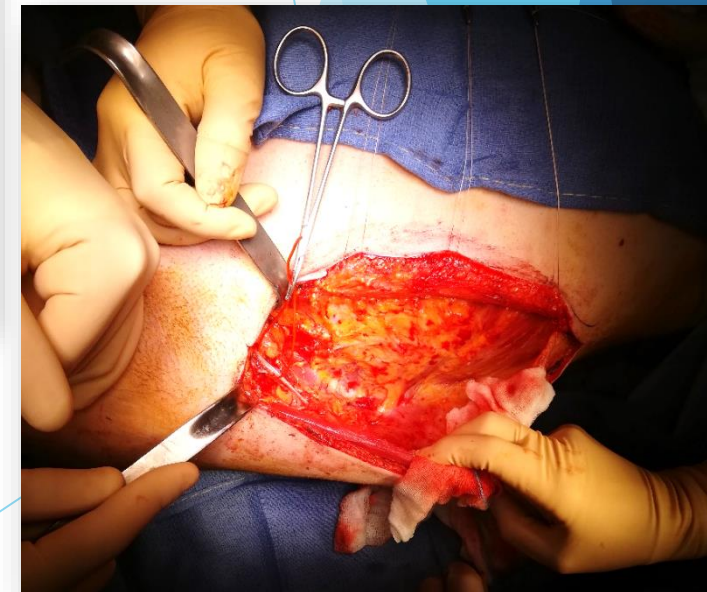
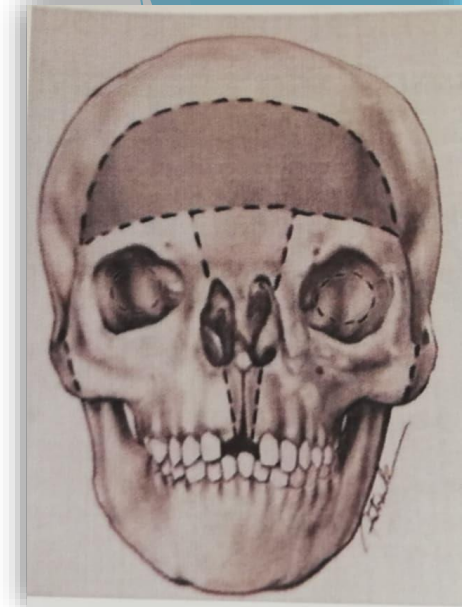
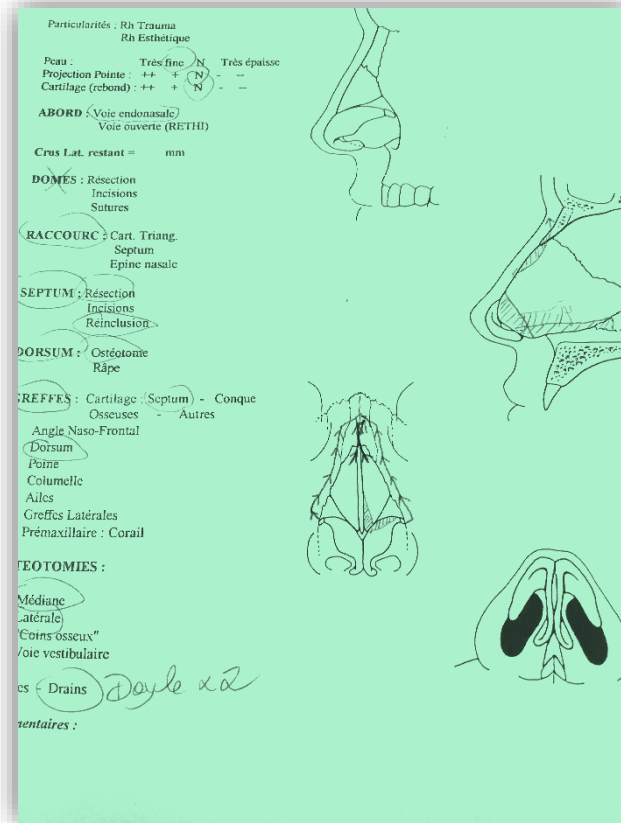
According to W.K.Busch, Brussels, 10.03.02

<https://www.eacmfs.org/information/training-guidelines/training-guidelines/>

# My participation in operations (over 100) as assistant

- ✓ Great variety of new and interesting operations
- ✓ Reinforcement of knowledge
- ✓ Motivation for study and research

- Harvesting of osteocutaneous fibula free flap
- Harvesting of latissimus dorsi (free flap)
- Harvesting of radial free flap
- Harvesting of scapular flap
- Cervicofacial lifting
- Rhinoseptoplasties
- Otoplasties
- Cranioplasty and and fronto-orbital advancement for hypertelorism correction
- Harvesting iliac bone flap (non-vascularised) for correction of hemifacial microsomia
- Harvesting cranial bone graft
- Harvesting of costal graft for ear reconstruction
- Repair of bilateral lip cleft
- Distraction osteogenesis of maxilla after LeFort I osteotomy
- Removal of submandibular gland with intraoral approach





# My conclusions after 12 weeks of training

1. The French colleagues are very polite, friendly, and hard-working doctors
2. Amiens is a small, quiet, and well organized French city ideal for someone who wants to stay focused in studying
3. The OMFS clinic in Amiens offers advanced knowledge and experience not only in microvascular maxillofacial reconstruction but also in other fields of specialty such as esthetic surgery, orthognathic surgery, correction of craniofacial deformities, and skin surgery.

**BUT**

**3 MONTHS of training maybe not enough**



MERCI BEAUCOUP  
EACMFS, **STRYKER** et  
CMFS d'Amiens!!!!  
mais....

